

Statewide Community Conversation Series

# *Adapting and Building Resilience for Climate Change in New Mexico*

# EMNRD Energy Conservation & Management Division:

The Energy Conservation and Management Division (ECMD) is the New Mexico State Energy Office and is statutorily authorized to develop and implement innovative clean energy programs, promote grid resilience, ensure energy security, and lead the way on state government climate action.



# State Climate Resilience and Adaptation Planning (a brief history)

- ❖ Executive Order 2019-003 set New Mexico's greenhouse gas reduction targets and designated the NMED and EMNRD as the lead agencies to spearhead state climate action.
- ❖ In 2000 to 2022, the Climate Change Task Force formed, ECMD conducted State Resilience Assessment Project, BRIC grants awarded, NM Climate Risk map web application launched.
- ❖ EMNRD launched the Climate Policy Bureau in April 2023.
  - Facilitate renewable energy solutions.
  - Prioritize participation by low income and disadvantaged communities and incorporate environmental and climate justice into policy and planning.
  - Support agencies as they incorporate climate resilience and adaptation practices into their policies and operations.

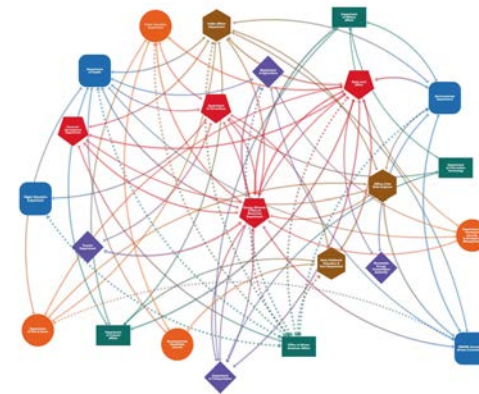
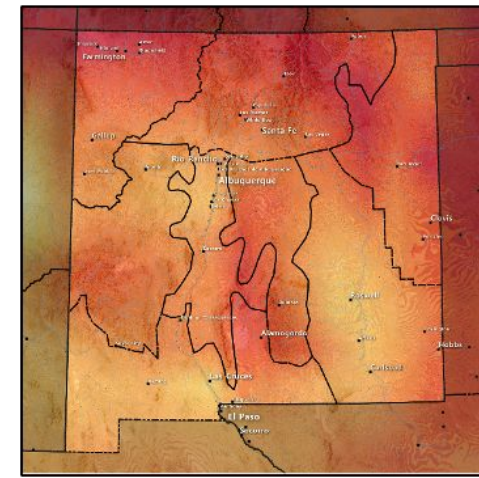
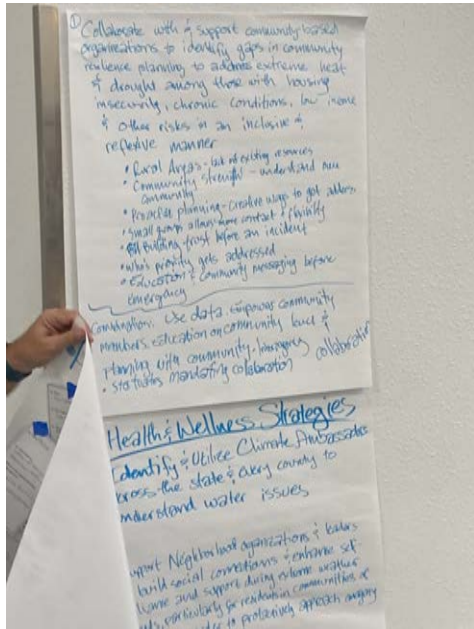


# State Agency Workshops

## Workshop I- Identifying Concerns and Assessing Risk

## Workshop II – Developing and Prioritizing Adaptation & Resilience Actions

## Workshop III – Plan Development



# Exploring Resilience Themes & Strategies

## COMMUNITY & CULTURE



Empowering communities to preserve and draw upon their cultural heritage and traditional knowledge to enhance social cohesion, community engagement, and collective action for resilience.

## ECOSYSTEMS & NATURAL RESOURCES

Protecting, restoring, and managing sustainable natural resources and ecosystems to strengthen ecological resilience and maintain the services these ecosystems provide to our communities.



## HUMAN HEALTH & WELLNESS



Prioritizing public health and well-being to build resilience in the face of public health crises and both chronic and acute environmental health risks, ensuring access to healthcare services, mental health support, and effective disaster preparedness and response.

## WATER SYSTEMS

Dedicated to strengthening the resilience of water-related infrastructure, encompassing water supply systems, wastewater treatment, and flood management. The primary goal is to enhance water quality and distribution while protecting or improving equitable access and water security for all.



## INFRASTRUCTURE & BUILT ENVIRONMENT



Enhancing the resilience of physical infrastructure, including critical facilities, transportation networks, and social/cultural assets, to withstand and recover from extreme weather events and other disruptions, while also supporting the daily activities of New Mexicans in a sustainable manner.

## LOCAL ECONOMIES

Strengthen local economies by promoting economic diversification and industry mixes that reduce greenhouse gas emissions, support small businesses, foster job creation and workforce development opportunities, and encourage sustainable industry practices.





# Next Steps

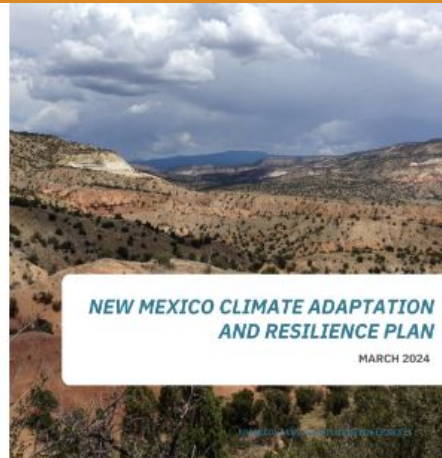
- Develop stakeholder engagement and relationships related to climate adaptation and resilience.
- Sustained outreach, relationship development, and partnership support activities to maintain and communicate progress.
- Foster a culture of resilience and preparedness among state, local, and tribal governments and their stakeholders.
- Support Implementation of Resilience and Climate Adaptation/SHMP Climate Change Annex statewide.

<https://www.climateaction.nm.gov/carp/>

**Read the Climate Adaptation and Resilience Plan**

Read the Report

Share Your Feedback!



**Join Us at the Following Events!**

**TRUTH OR CONSEQUENCES**  
May 20th At 6pm  
Ralph Edwards Civic Center:  
400 W 4th St, Truth Or Consequences, NM 87901

**ROSWELL**  
May 21st At 6pm  
ENMU-Roswell Occupational Technology Center:  
20 W. Mathis St, Room 124, Roswell, NM 88203

**ALBUQUERQUE**  
May 22nd At 6pm  
Jackson Student Center:  
1922 Las Lomas NE  
Albuquerque, NM 87106

**FARMINGTON**  
June 3rd At 6pm  
Riverside Nature Center:  
N Browning Pkwy, Farmington, NM 87402



**ENERGY  
CONSERVATION  
& MANAGEMENT  
DIVISION**

**TAOS**  
June 4th At 6pm  
Bataan Hall:  
121 Civic Plaza Dr, Taos, NM 87571

**LAS VEGAS**  
June 5th At 6pm  
Stella's Cafe/Kickstart Kafe:  
148 Bridge St., Las Vegas, NM 87701

**TRIBAL WORKSHOP**  
June 6th At 12pm  
Mabry Hall, Jerry Apodaca Education Building  
300 Don Gaspar Avenue Santa Fe, NM 87501

**VIRTUAL WORKSHOP**  
June 11th At 6pm  
[Link To The Event](#)  
Please Make Sure To Sign Up At The Top!



## QR Code for Workshop Feedback



Rachel Finkelstein

Bureau Chief, Climate Policy Bureau

[Rachel.Finkelstein@emnrd.nm.gov](mailto:Rachel.Finkelstein@emnrd.nm.gov)

Robert Gomez

Sustainability & Resilience Officer

[Robert.Gomez@emnrd.nm.gov](mailto:Robert.Gomez@emnrd.nm.gov)

Tess Ngochi

Resilience Coordinator

[Tess.Ngochi@emnrd.nm.gov](mailto:Tess.Ngochi@emnrd.nm.gov)